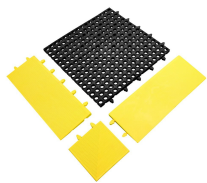
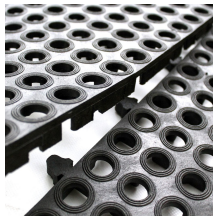
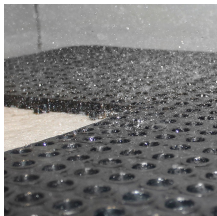
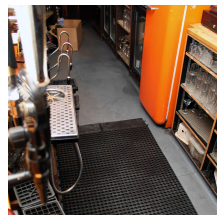
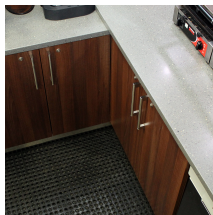
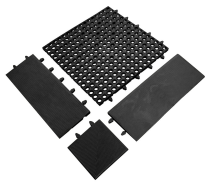
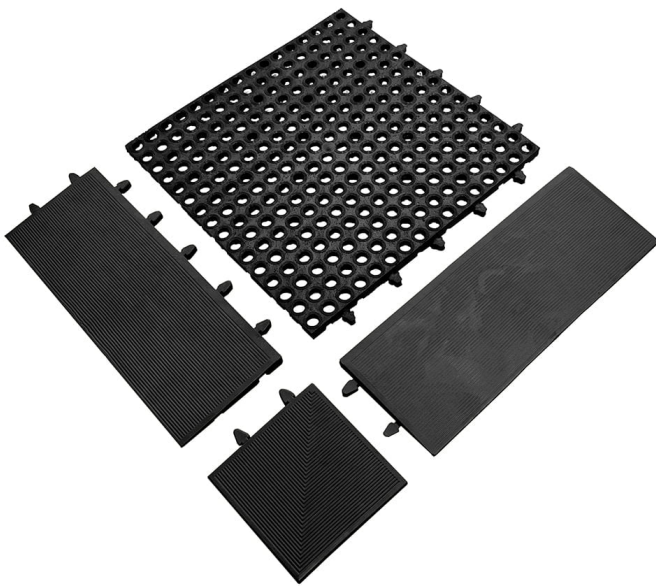


## Tough Deck

### Recycled drainable workplace tiles



- Non-slip interlocking decking for wet areas.
- Combination of substantial product height and large holes offers excellent drainage.
- An economical yet heavy-duty matting solution.
- Easy DIY installation with connectors that conceal joins.
- Ideal for industrial use, especially in areas prone to liquid spillage.
- Ramped edges to prevent trips are available in black or yellow.
- Provides entry level anti-fatigue properties.
- Slip tested to DIN 51130.



## Componentes

Número de parte	Dimensões	Cor	Peso (kg)
TDC010001	0.18 m x 0.18 m	Black	1.168
TDC070001C	0.18 m x 0.18 m	Yellow	1.6
TDE010001F	0.48 m x 0.18 m	Black	1
TDE010001M	0.48 m x 0.18 m	Black	1
TDE070001F	0.48 m x 0.18 m	Yellow	1.2

## Especificação técnica

<b>Material</b>	Recycled rubber and plastic
<b>Product Height</b>	20 mm
<b>Product Weight</b>	1.95 kg
<b>Hole Size</b>	16 mm
<b>COO (Country of Origin)</b>	South Africa
<b>Slip Tested to</b>	DIN 51130 - R10

Número de parte	Dimensões	Cor	Peso (kg)
TDE070001M	0.48 m x 0.18 m	Yellow	1.4
TDT010001	0.48 m x 0.48 m	Black	1.95

Baixar